

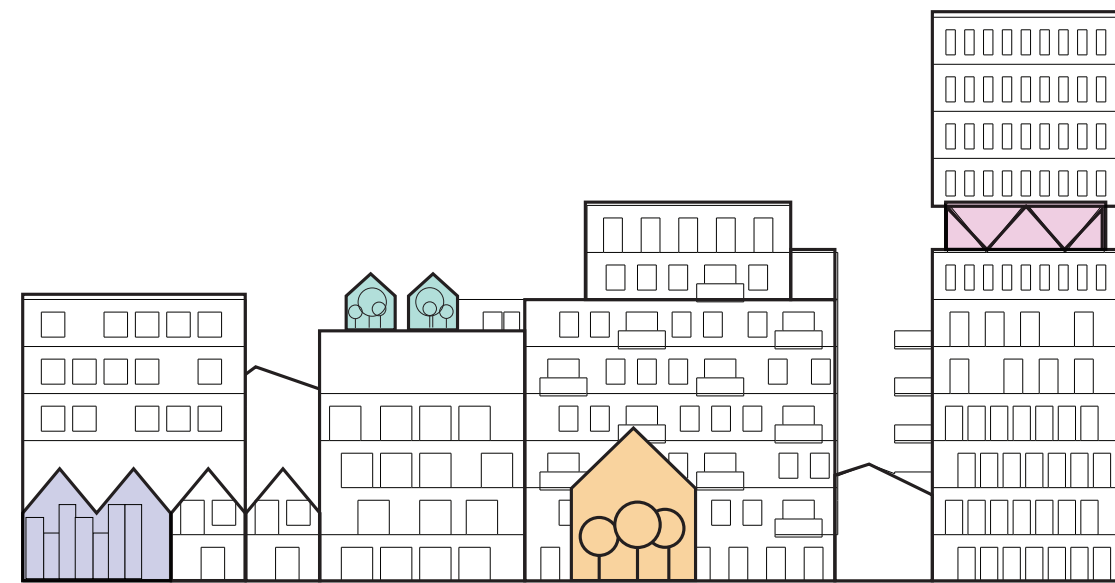
AVIAPOLIS WTWMF

VANTAA

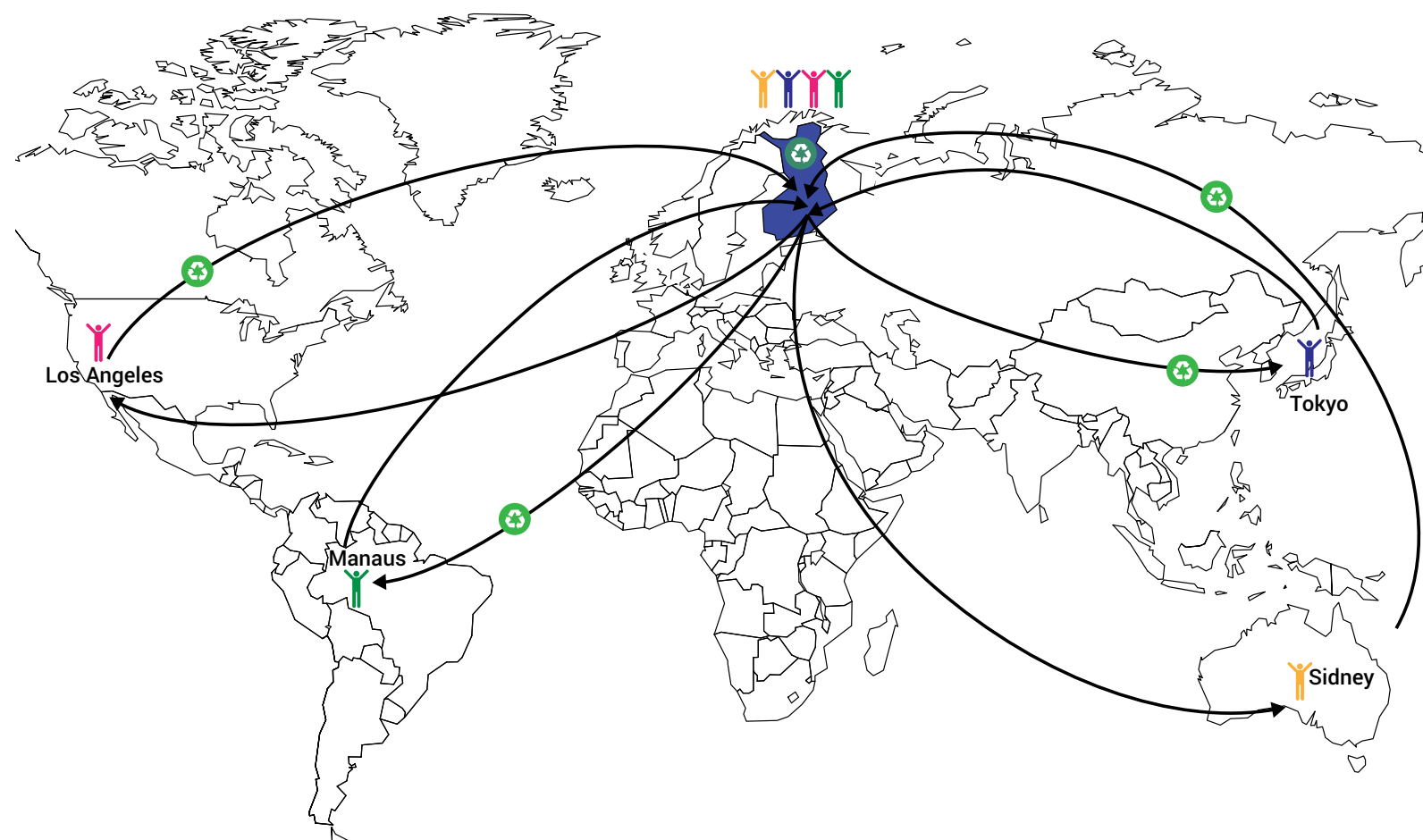




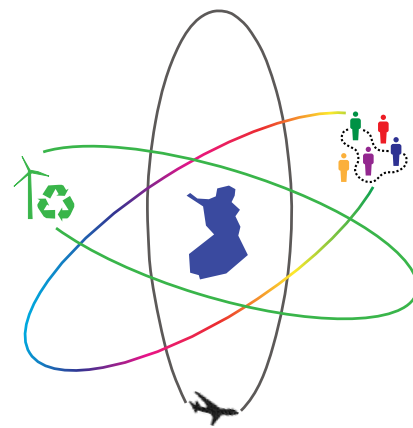
+



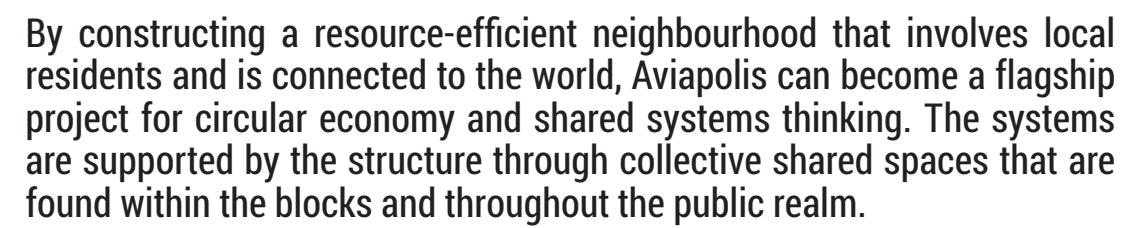
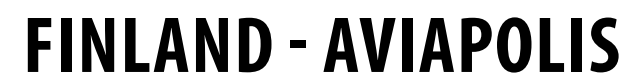
WHERE THE WORLD MEETS FINLAND

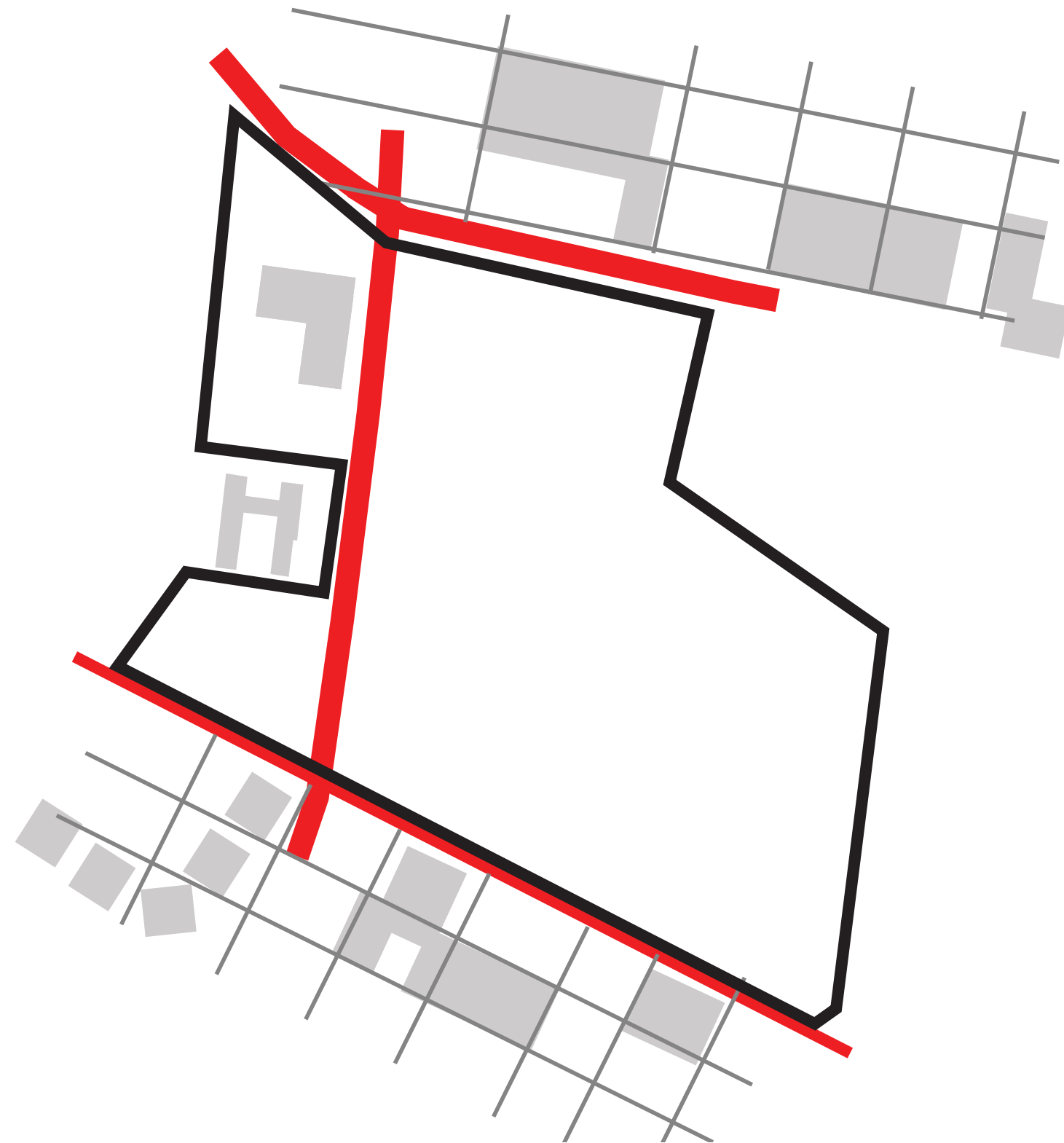


WORLD - FINLAND

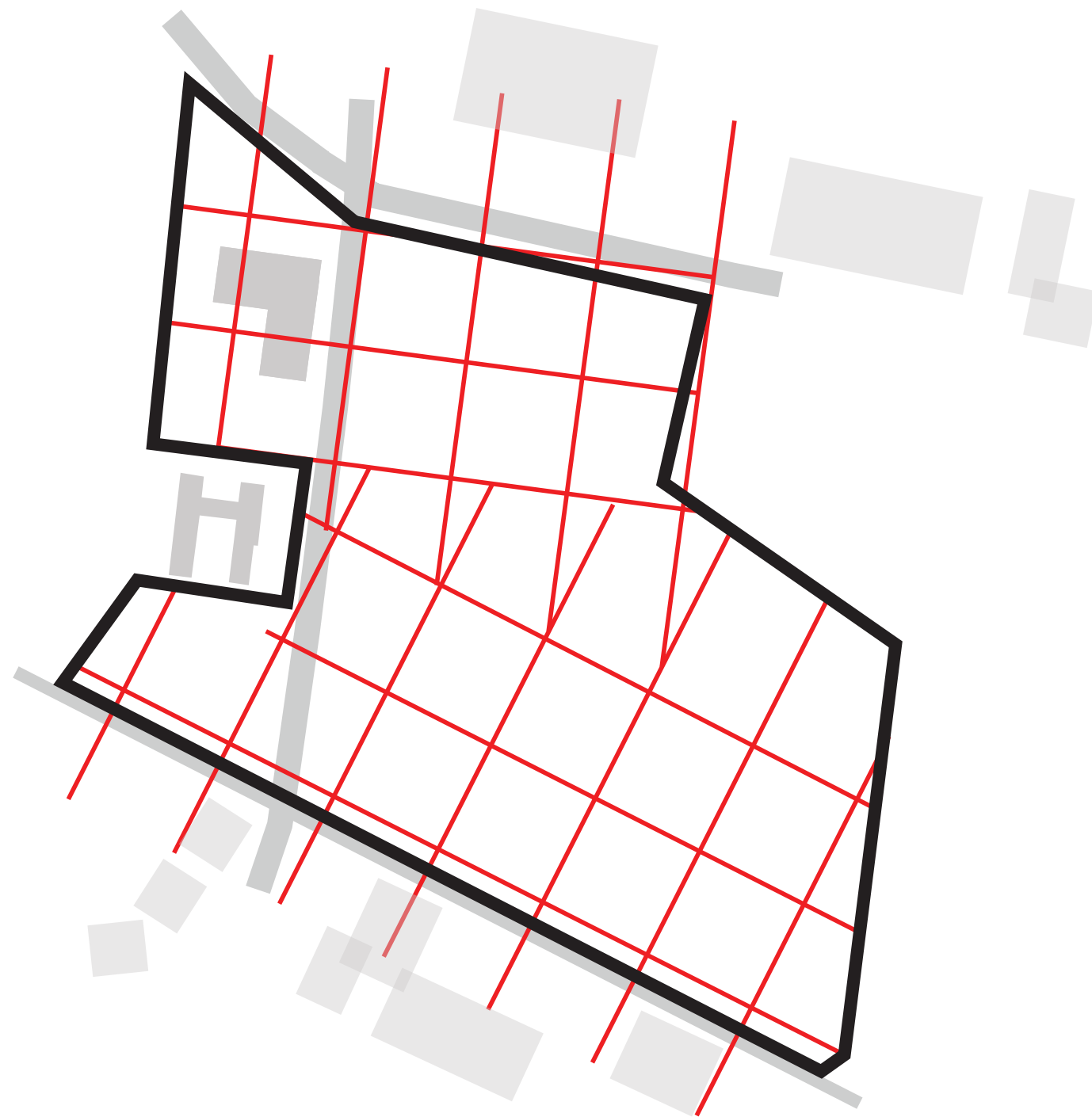


Aviapolis is a gateway from Finland to the world. 20 million passengers will pass through the bustling Helsinki-Vantaa air-traffic hub in 2020. The airport introduces a rich cultural exchange to Vantaa and forms a junction where local life meets global flows. There are consequences for this richness, the airport's air traffic generates great amounts of waste that degrades the local environment.

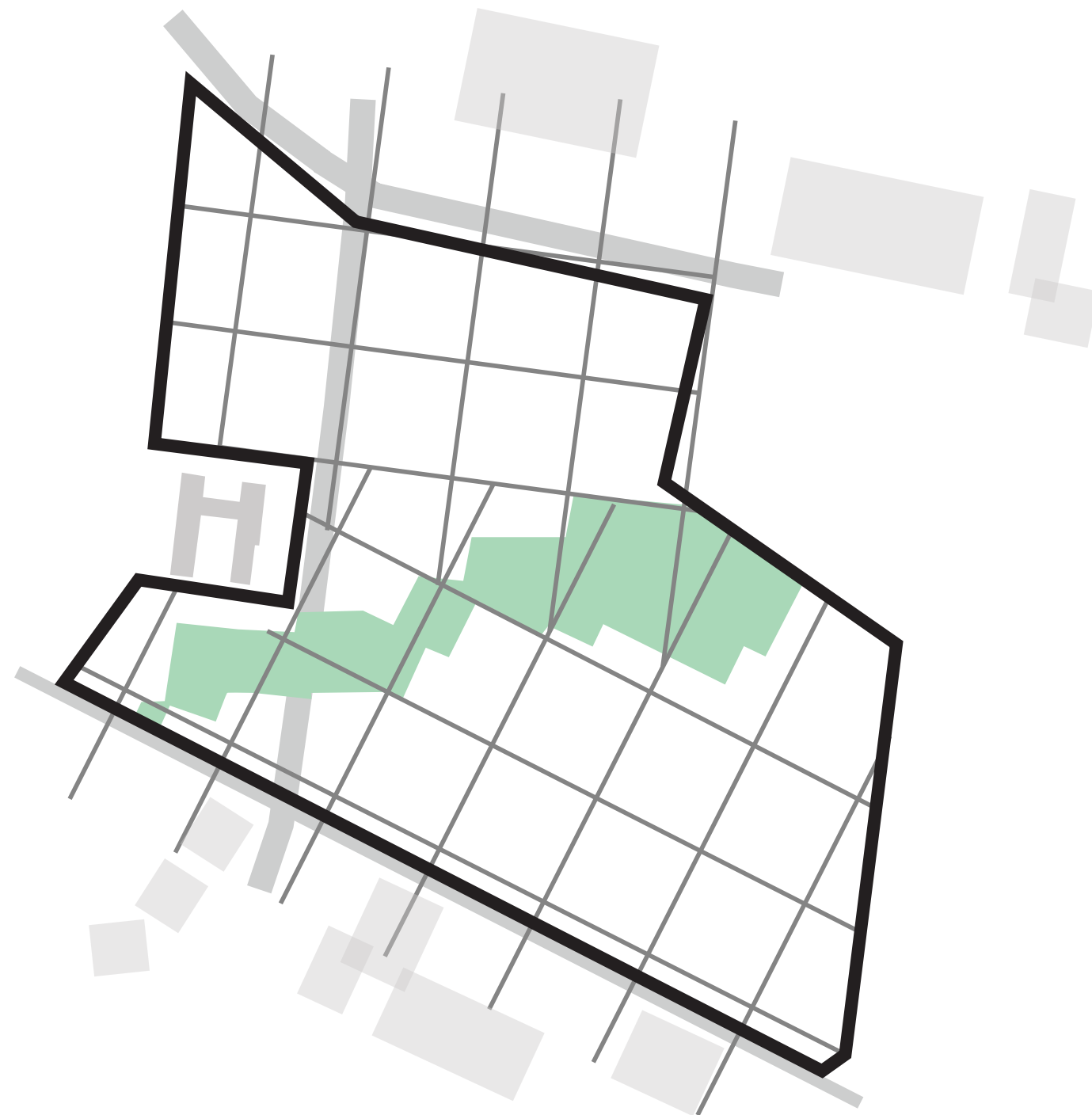




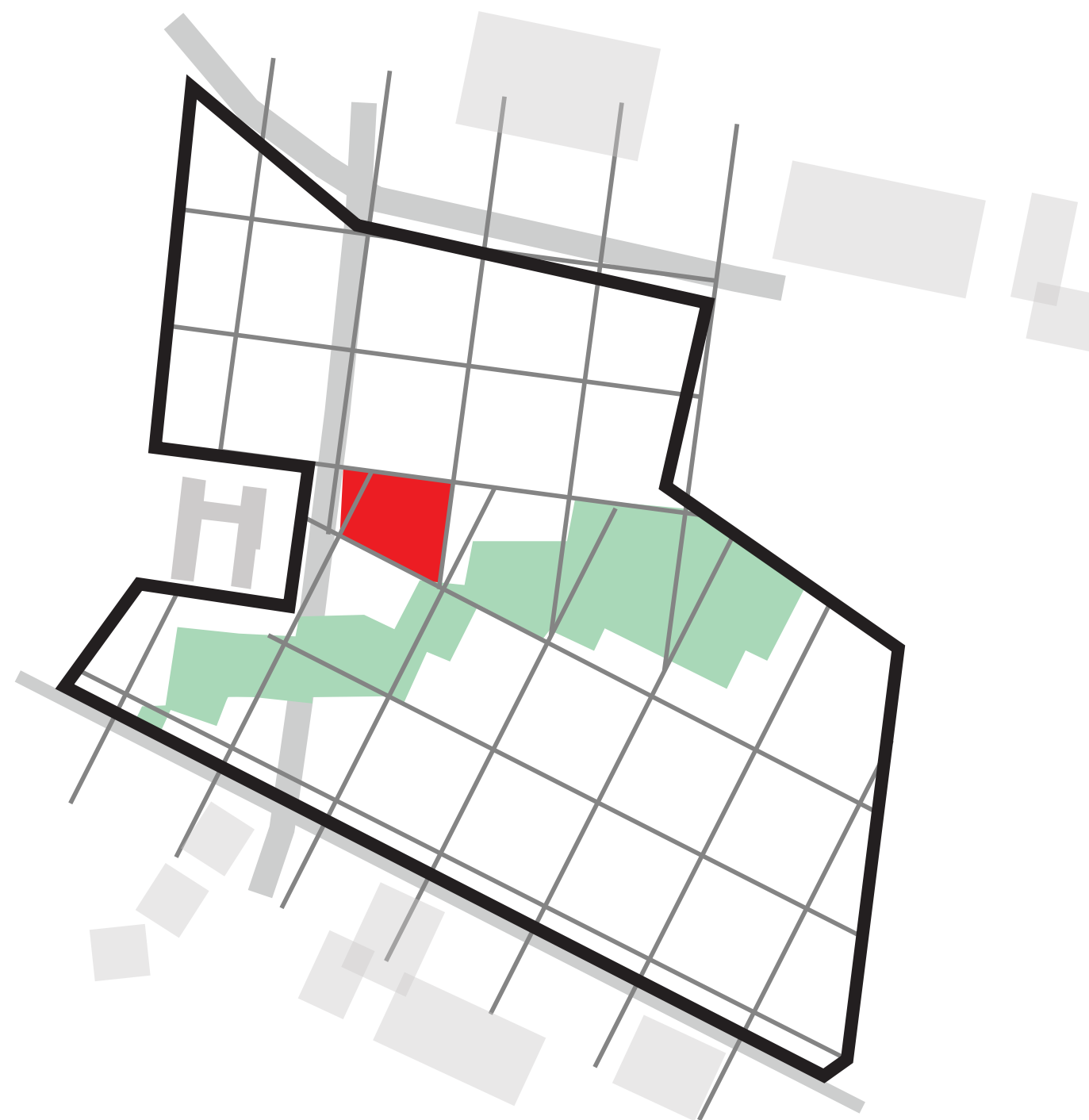
1. SITE TODAY + CONTEXT GRID



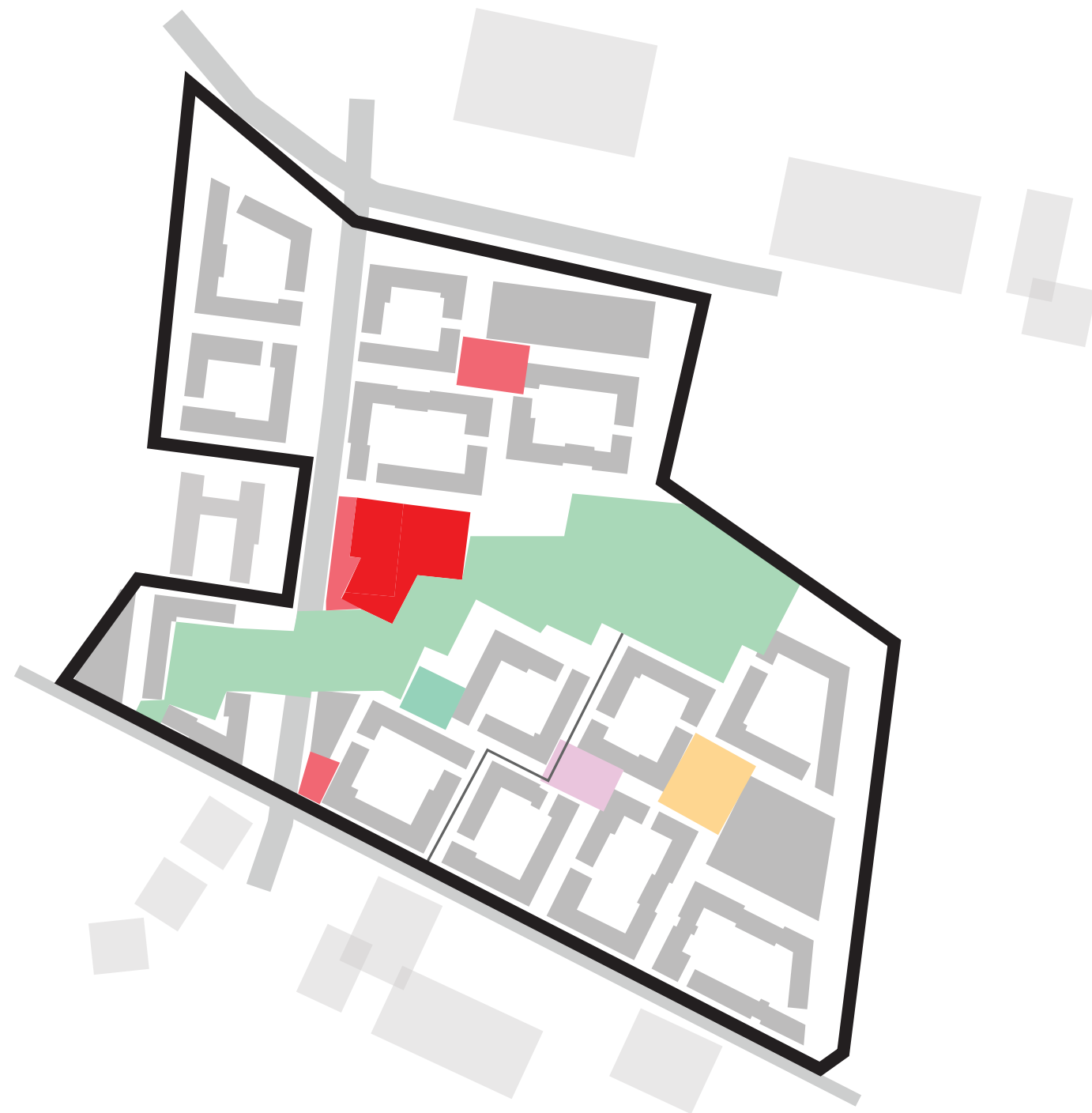
2. EXTENDING THE GRID



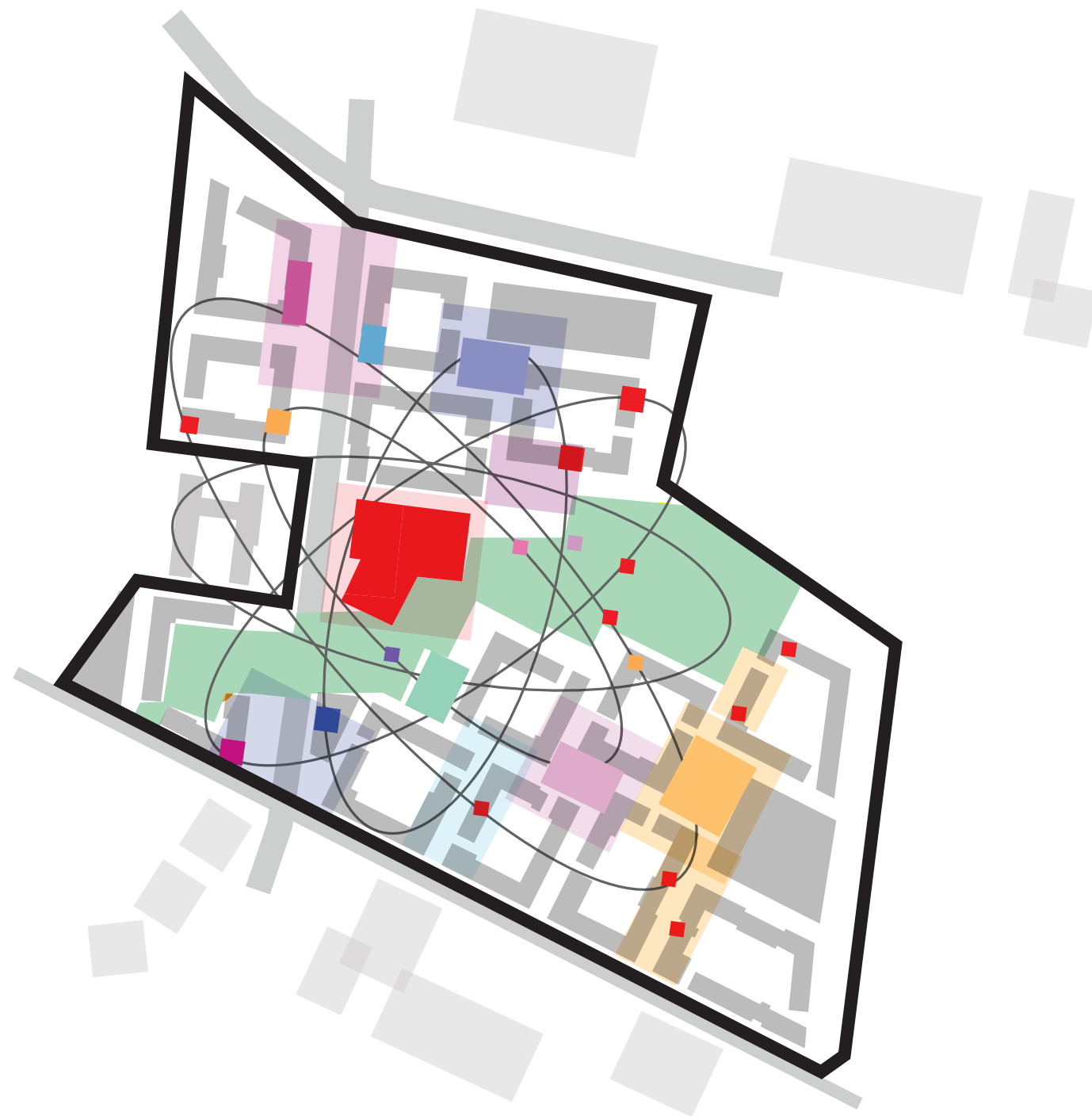
3. BLUE GREEN BINDING THE GRIDS



4. ATOMI EDUCATION CATALYST



5. SHIFTING STRUCTURE MAKES ROOM FOR SOCIAL POCKETS

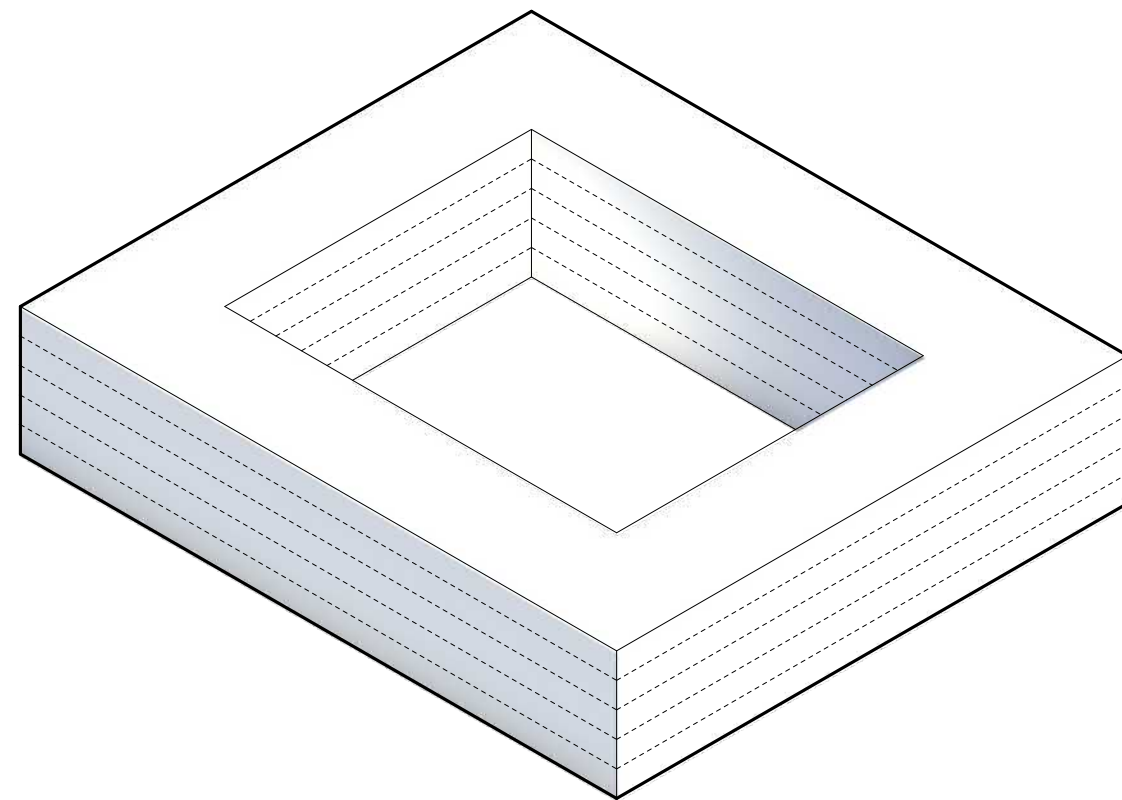


6. SOCIAL ATOMS VARIETY GIVING ENERGY FOR LIFE AND LOCAL IDENTITY



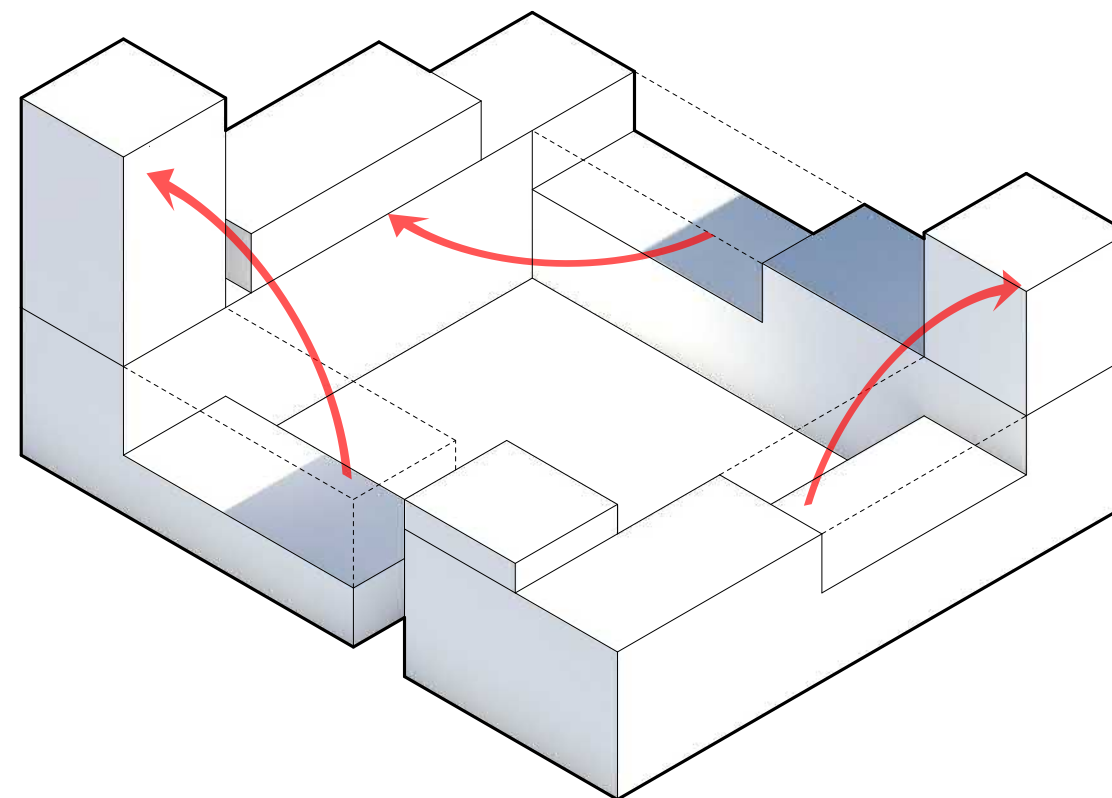


THE AVIAPOLIS BLOCK



TRADITIONAL BLOCK

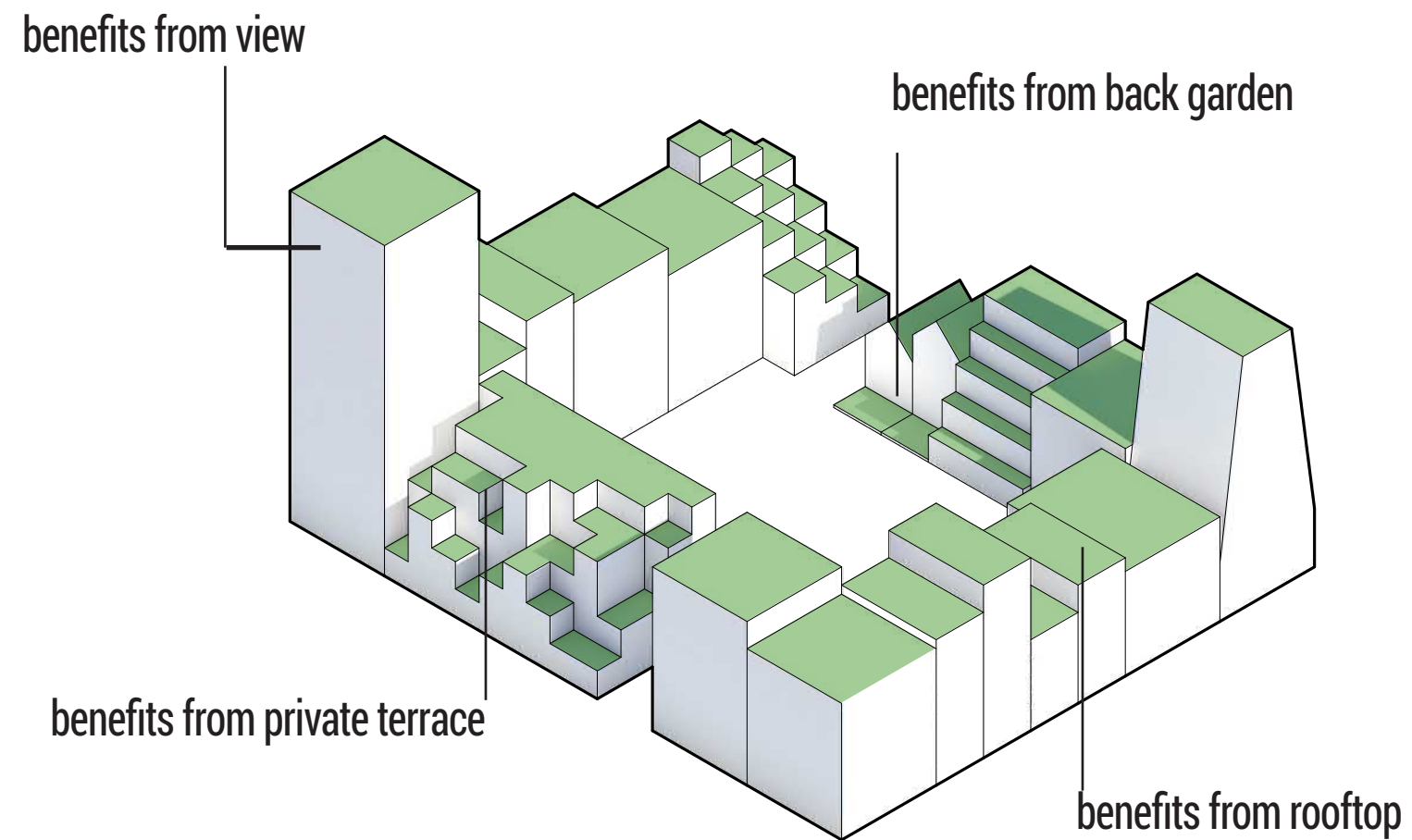
12.000 M2
EQUAL CONDITIONS



REDISTRIBUTED MASS

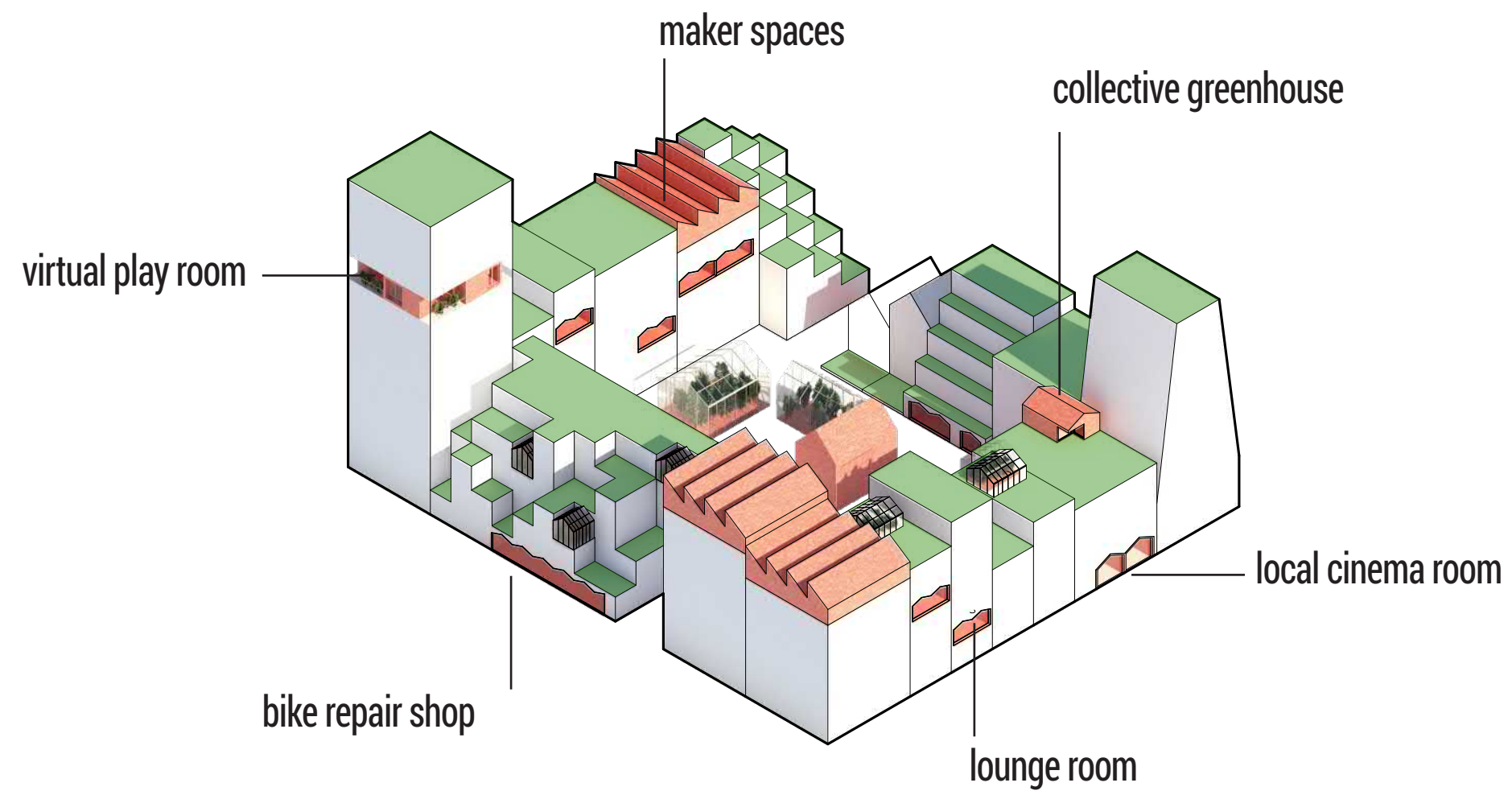
12.000 M2

VARIETY OF EQUIVALENT QUALITIES



AVIAPOLIS BLOCK

12.000 M2
VARIETY OF EQUIVALENT QUALITIES



AVIAPOLIS BLOCK
12.000 M2
VARIETY OF SOCIAL SPACES

THE AVIAPOLIS BLOCK



TYPOLOGIES TOOLBOX



INDIVIDUAL HOUSING



THE CUBE



STEPS HOUSING



DOMINO HOUSES



THE CASCADE



THE PIXELS



THE HAT



MIXED-USE



OFFICES



VERTICAL GARDEN



BIKE HUB



MANDAWORKS

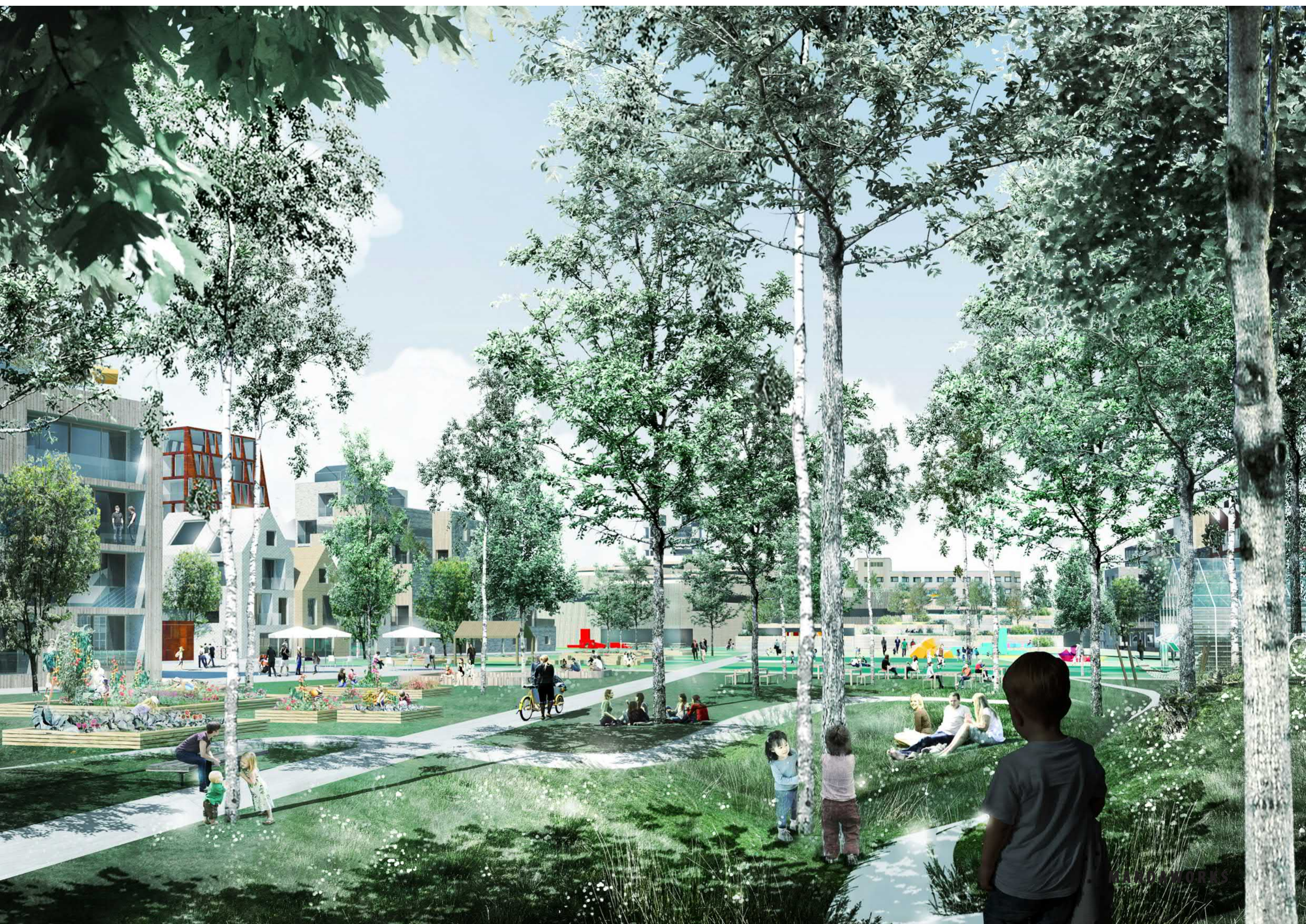
MOBILITY HUB





INFC

LANDWORKS



LANDWORKS



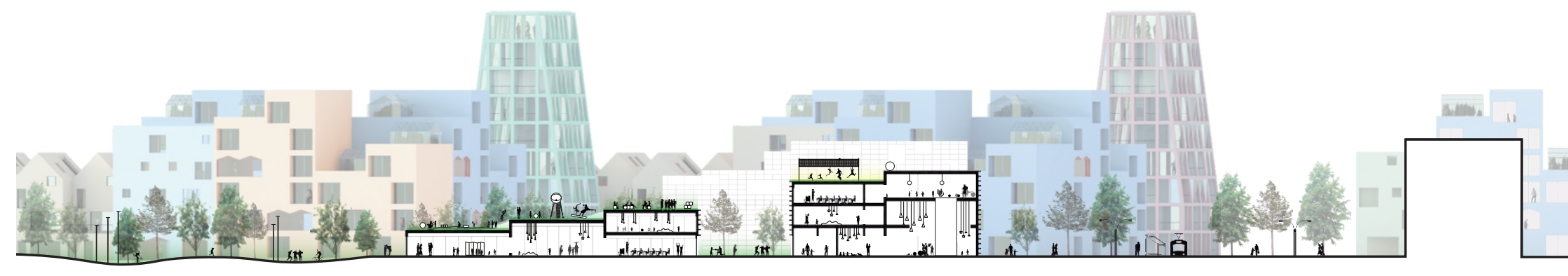
A. DETAIL PLAN OF THE URBAN BLOCKS, 1:500



SECTION AA 1/500

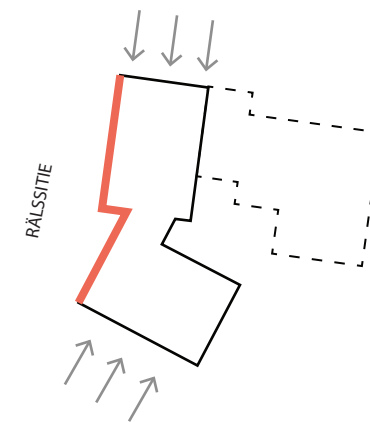


B. DETAIL PLAN OF THE URBAN BLOCKS AND ATOMI, 1:500

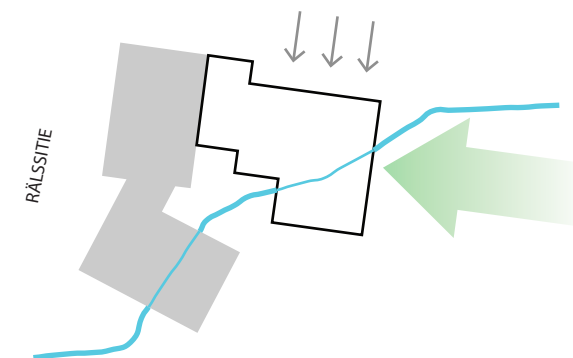


SECTION BB 1/500

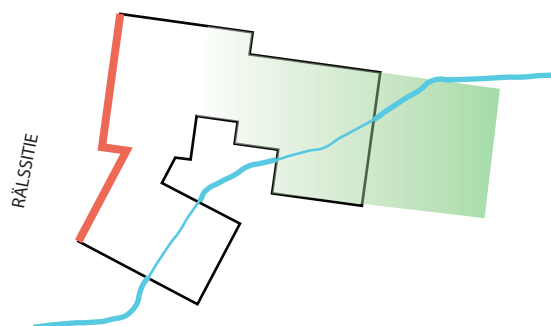
ATOMI PHASING



1. In the first phase (6000m²), Atomi creates a front towards Rälssitie, merging in one volume the two Aviapolis structure grids



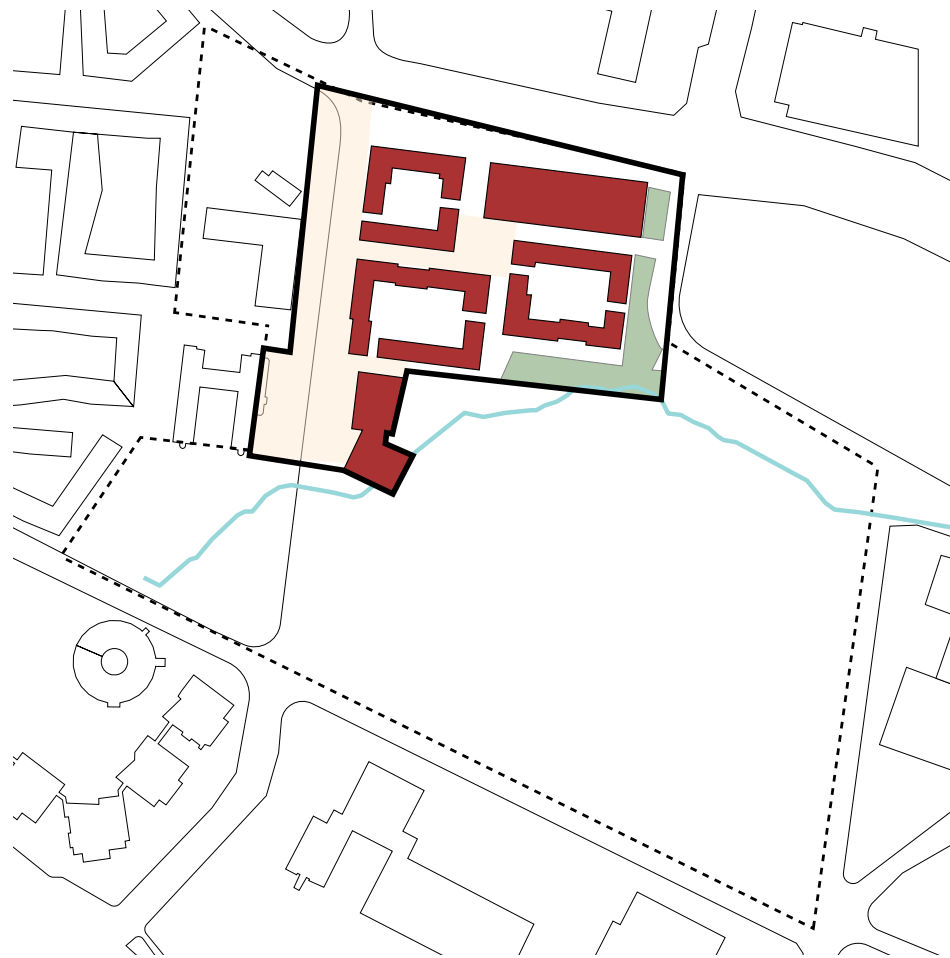
2. In the second phase (4000m²), Atomi will be extended towards the park, in order to create a connection with the green through stepping down terraces



3. Once completed, Atomi will be experienced as a social attractor of Aviapolis, both as an iconic building facing the main road, and as a landscape-integrated building facing the park



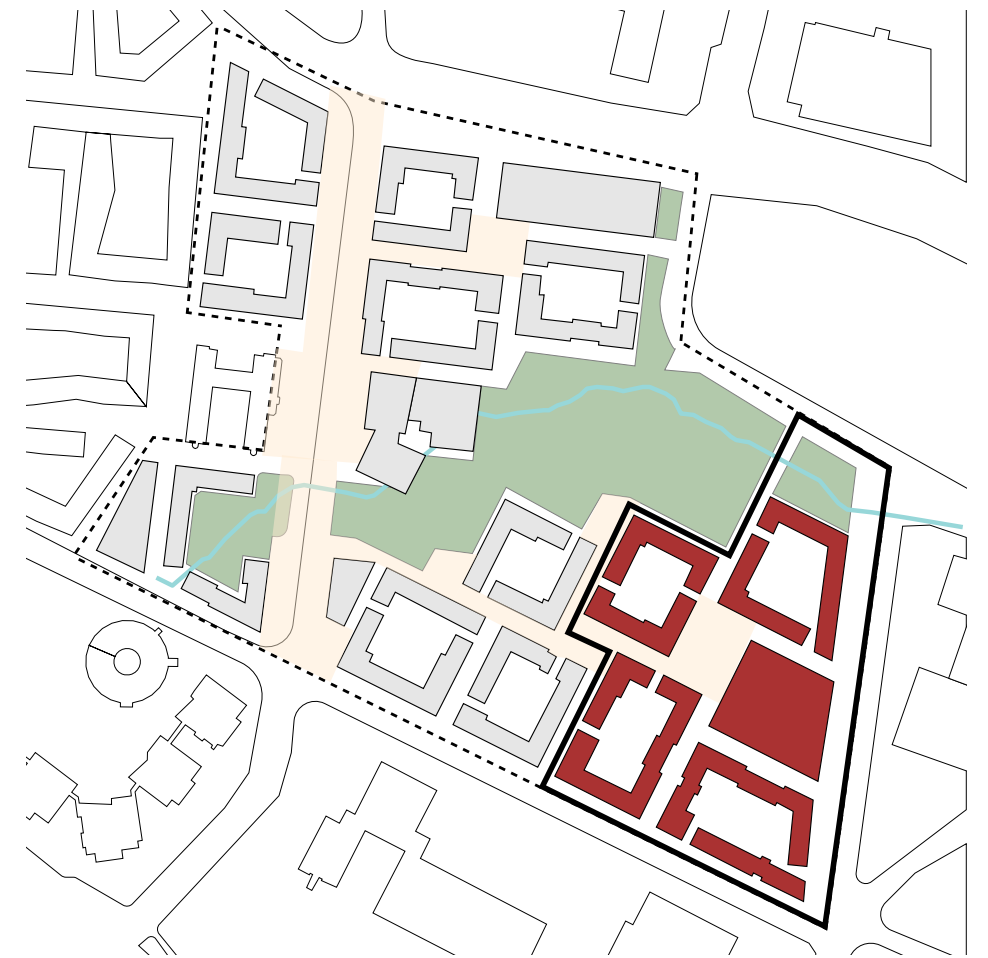
MANDAWORKS



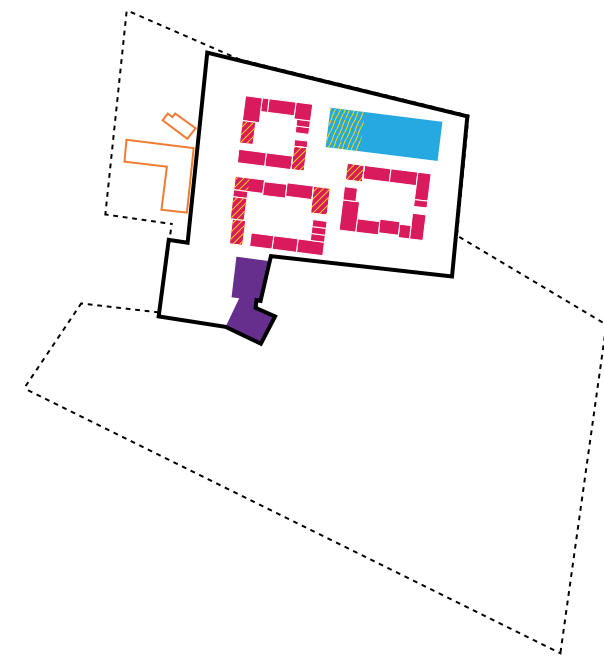
PHASE 1 2020



PHASE 2 2026

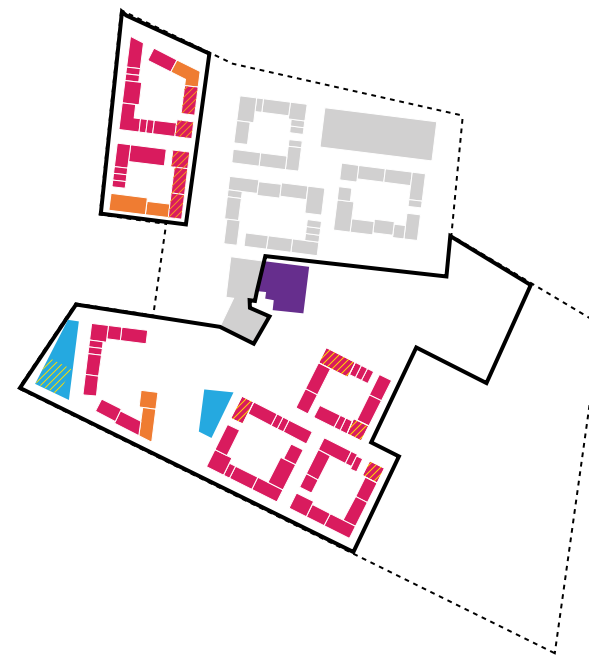


PHASE 3 2030



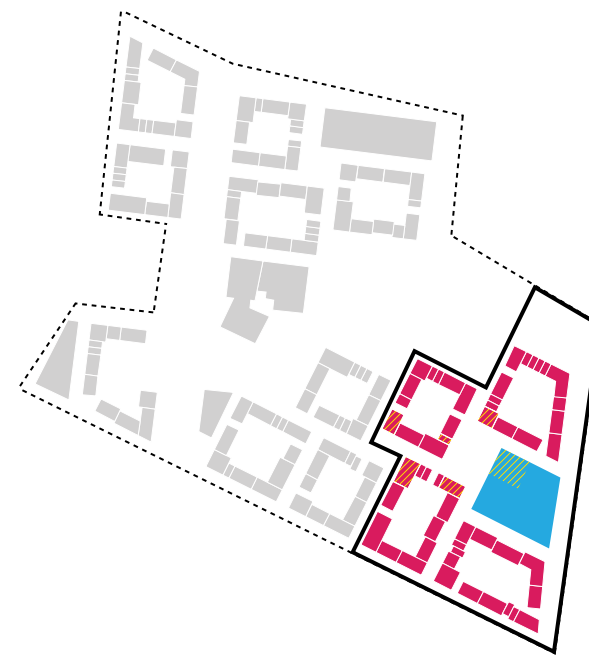
PROGRAM PHASE 1 2020

■ housing ■ culture/ education ■ mobility hub
■ existing office ■ services



PROGRAM PHASE 2 2026

■ housing ■ culture/ education ■ mobility hub
■ office ■ services



PROGRAM PHASE 3 2030

■ housing ■ mobility hub
■ services

PHASE 1
HOUSING: 35.000 M2
10.500 M2 OF 25M2 APT (30%)
10.500 M2 OF 80M2 APT (30%)
7.000 M2 OF 45M2 APT (20%)
3.500 M2 OF VARIOUS M2 APT (10%)
3.500 M2 OF COLLECTIVE SPACES (10%)
OFFICES (EXISTING): 5.600 M2
OFFICES: 16.000 M2
CULTURE/EDUCATION: 6.000 M2
MOBILITY HUB: 15.000 M2
SERVICES: 7.000 M2

TOTAL: 79.000M2

PHASE 2
HOUSING: 70.000 M2
21.000 M2 OF 25M2 APT (30%)
21.000 M2 OF 80M2 APT (30%)
14.000 M2 OF 45M2 APT (20%)
7.000 M2 OF VARIOUS M2 APT (10%)
7.000 M2 COLLECTIVE SPACES (10%)
OFFICES: 14.000 M2
CULTURE/EDUCATION: 5.000 M2
MOBILITY HUB: 4.200 M2
SERVICES: 14.000 M2

TOTAL: 107.200 M2

PHASE 3
HOUSING: 45.000 M2
13.500 m2 of 25m2 apt (30%)
13.500 m2 of 80m2 apt (30%)
9.000 m2 of 45m2 apt (20%)
4.500 m2 of various m2 apt (10%)
4.500 m2 of collective spaces(10%)
OFFICES: 0 M2
CULTURE/EDUCATION: 0 M2
MOBILITY HUB: 20.000 M2
SERVICES: 9.000 M2

TOTAL: 74.000 M2

TOTAL
HOUSING: 150.000 M2
45.000 m2 of 25m2 apt (30%)
45.000 m2 of 80m2 apt (30%)
30.000 m2 of 45m2 apt (20%)
15.000 m2 of other sizes m2 apt (10%)
15.000 m2 collective spaces (10%)
OFFICES: 30.000 M2
CULTURAL/EDUCATION: 11.000 M2
MOBILITY HUB: 39.200 M2
SERVICES: 30.000 M2

OVERALL TOTAL: 240.200 M2



HOUSING TYPOLOGIES

- | | | |
|-------------------|----------------|------------------------|
| individual houses | domino houses | hat houses |
| the cube | cascade houses | mixed use houses |
| steps houses | pixel houses | vertical garden houses |



BLUE GREEN

- | | |
|--------------------|-----------------------|
| public green | existing water |
| semi-private green | stormwater collection |
| private green | |



PARKING

- | | |
|--------------------|-------------------|
| mobility hub | 500 bike parking |
| | 1500 car parking |
| block bike parking | 4900 bike parking |



TRAFFIC

- | | |
|-----------------------------|--|
| red line | bike / pedestrian street with car access |
| orange line with black dash | car street with tram |
| orange line | car street |



PUBLIC / COLLECTIVE SPACES

- | | | |
|------------------------|-----------------|------------------|
| recycling area | workshop area | green community |
| educational playground | shared mobility | educational area |
| mobility centre | | |
| green activities | | |

